

Diabetes Renal Disease Prevention, Detection, Treatment and Monitoring

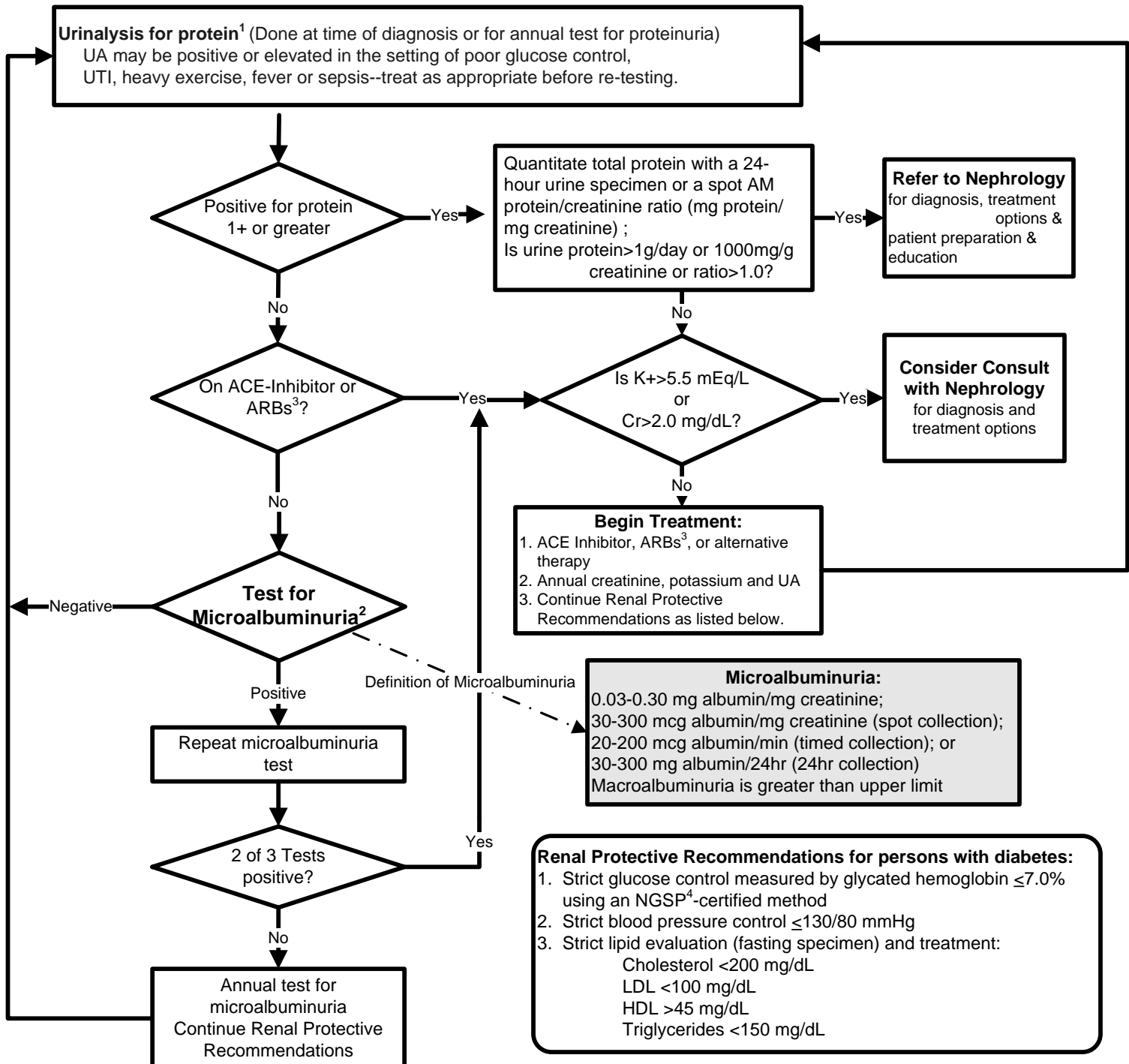
Type 1 and Type 2; age 12 years and older with no overt renal disease

Originally published: November 2001; Updated January 2005/July 2010/April 2013

Washington State Clinical Advisory Council to the Washington State Department of Health

Adapted and modified for use by the Advisory Council with permission from the

Washington State Department of Health Diabetes Kidney Screening & Treatment Task Force



¹Check with your lab on test choice and availability, specimen collection, preference, and interpretation.

²Most labs use a very sensitive method to measure albumin in the microalbumin range. Check with your lab on test choice and availability, specimen collection, preference, and interpretation.

³ARBs: Angiotensin Receptor Blockers

⁴NGSP: National Glycohemoglobin Standardization Program

FOR EDUCATIONAL PURPOSES ONLY

The individual clinician is in the best position to determine which tests are most appropriate for a particular patient