

# Ketron Island

## Annual Shellfish Growing Area Review



Prepared By: Merita Trohimovich

Area: Ketron Island

Year Ending: December 31, 2023

Classification: Approved, Prohibited

### Activities in the Growing Area in 2023

The growing area was sampled six times in accordance with the National Shellfish Sanitation Program (NSSP) Systematic Random Sampling criteria. No additional activities have been documented in the growing area.

### Analytical Results of Water Samples

Table 1 summarizes the results of the last 30 samples collected from the area. This summary shows that all stations pass the NSSP water quality standard. Station 882 only has 13 samples.

### Change in Actual Pollution Sources that Impact the Growing Area

We currently have no information indicating that the area has new sources of pollution.

### Classification Status

- Well within the classification standards
- Meets standards, but threatened with downgrade in classification
- Fails to meet current classification standards

### Remarks and Recommendations

Table 1 shows that all stations meet the NSSP water quality standard for an Approved classification and the area is correctly classified.

**TABLE 1. Summary of Marine Water Data (SRS) for the Ketron Island Growing Area**

Sampling Event Type: Regulatory

Maximum Number of Samples: 30

Tides Included: All

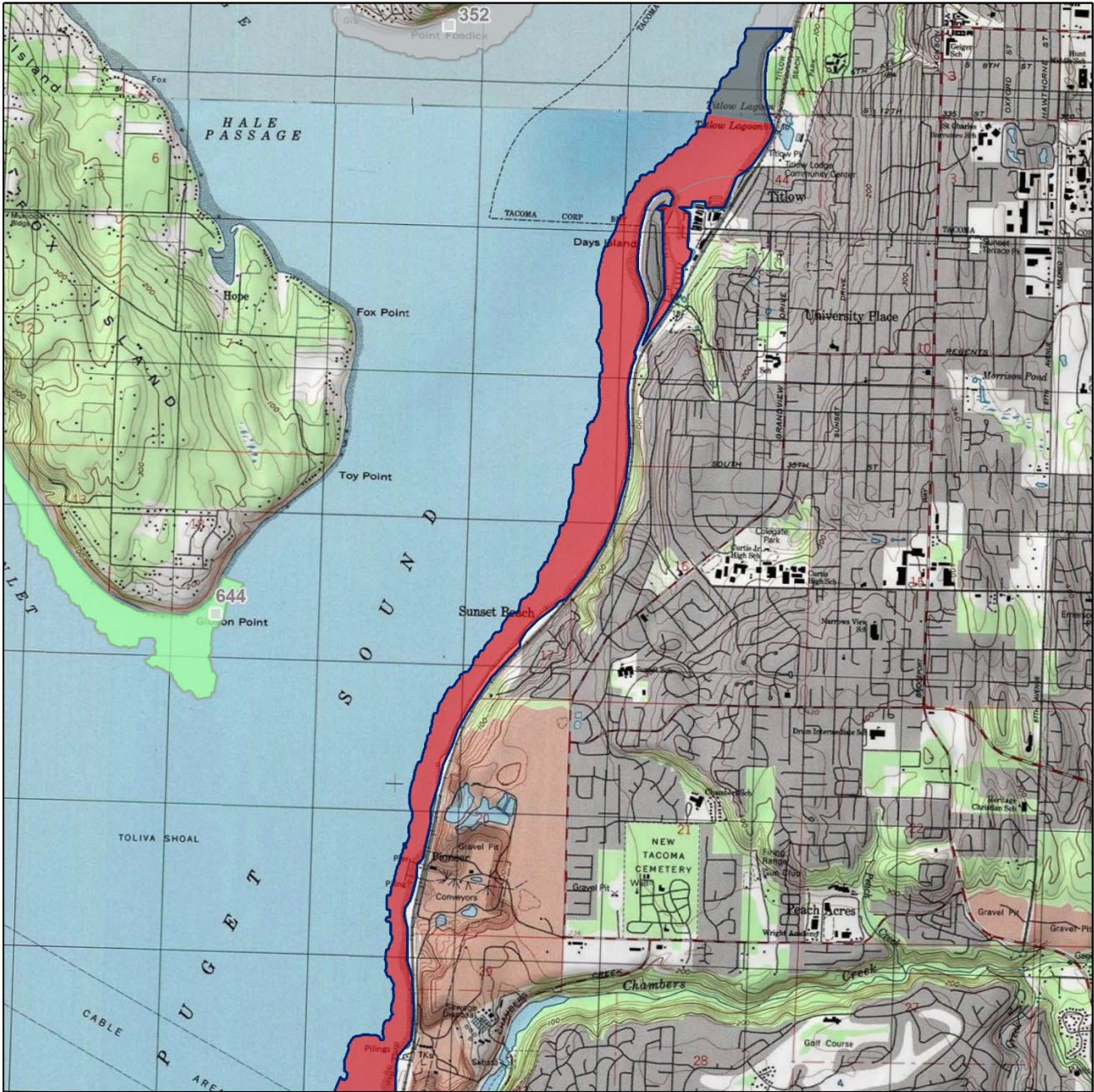
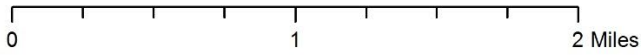
Station Number	Classification	Date Range	Range (FC/100mL)	Geomean (FC/100mL)	Est. 90 <sup>th</sup> Percentile (FC/100mL)	Meets Standard
801	Approved	4/25/2019-11/30/2023	1.7-4.0	1.9	2.5	Y
802	Approved	4/25/2019-11/30/2023	1.7-4.5	1.8	2.3	Y
803	Approved	4/25/2019-11/30/2023	1.7-7.8	2.0	3.4	Y
804	Approved	4/25/2019-11/30/2023	1.7-17.0	1.9	3.2	Y
826	Approved	4/25/2019-11/30/2023	1.7-4.5	1.8	2.3	Y
827	Approved	4/25/2019-11/30/2023	1.7-17.0	2.1	3.9	Y
882	Approved	11/29/21-11/30/2023	1.7-4.5	2.2	3.8	*NA

The standard for approved shellfish growing waters is fecal coliform geometric mean not greater than 14 organisms/ 100 mL with an estimated 90th percentile not greater than 43 organisms/ 100 mL. The above table shows bacteriological results in relation to program standards.

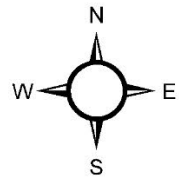
\* N/A – SRS criteria require a minimum of 30 samples from each station.

MAP 1. Ketron Island Growing Area (1 of 2)

 Ketron Island (1 of 2)



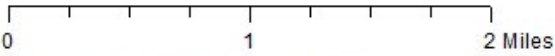
Classification	Sampling Stations
 Approved	
 Conditional	
 Prohibited	
 Restricted	
 Unclassified	



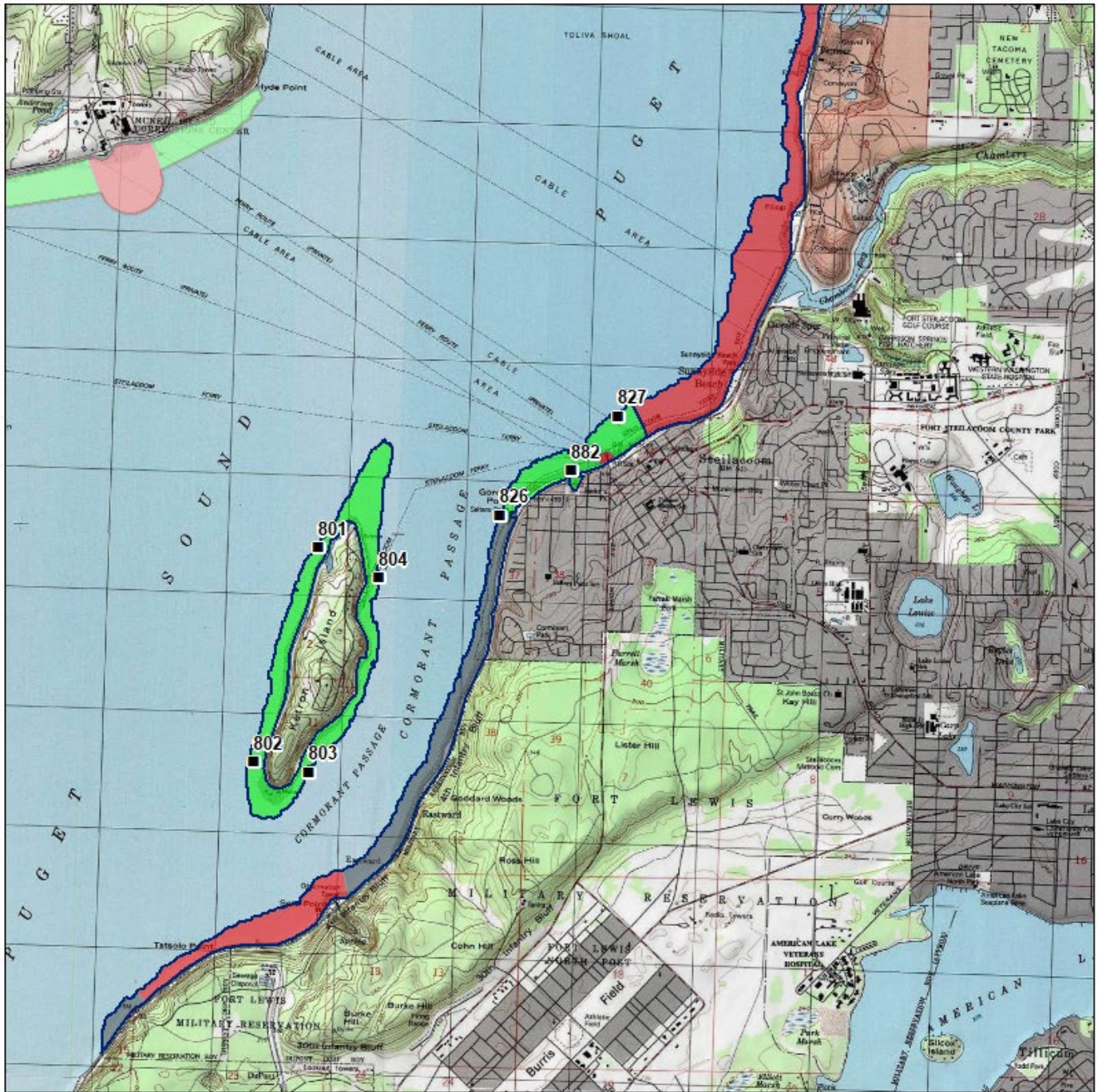
\* Some sampling stations are highlighted with grey box for ease of reading.




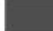
MAP 2. Ketron Island Growing Area (2 of 2)

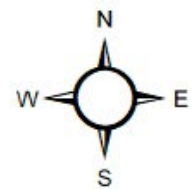
 Ketron Island (2 of 2)



  
Date Updated: 10/20/2021



Classification	Sampling Stations
 Approved	
 Conditional	
 Prohibited	
 Restricted	
 Unclassified	



\* Some sampling stations are highlighted with grey box for ease of reading.