

# Port Gamble

## Annual Shellfish Growing Area Review



Prepared By: Patrick Biondo

Area: Port Gamble

Year Ending: December 31, 2023

Classification: Approved, Prohibited

### Activities in the Growing Area in 2023

The growing area was sampled six times in accordance with the National Shellfish Sanitation Program (NSSP) Systematic Random Sampling criteria. A routine three-year shoreline evaluation was completed, and Kitsap Public Health District evaluated 20 on-site sewage systems and sampled 8 shoreline drainages. No new or changes in pollution sources were identified.

### Analytical Results of Water Samples

Table 1 summarizes the results of the last 30 samples collected from the area. This summary shows that all stations pass the NSSP water quality standard.

### Change in Actual Pollution Sources that Impact the Growing Area

We currently have no information indicating that the area has new sources of pollution.

### Classification Status

- Well within the classification standards
- Meets standards, but threatened with downgrade in classification
- Fails to meet current classification standards

### Remarks and Recommendations

Table 1 shows that all stations meet the NSSP water quality standard for an Approved classification and the area is correctly classified.

**TABLE 1. Summary of Marine Water Data (SRS) for the Port Gamble Growing Area**

Sampling Event Type: Regulatory

Maximum Number of Samples: 30

Tides Included: All

Station Number	Classification	Date Range	Range (FC/100mL)	Geomean (FC/100mL)	Est. 90 <sup>th</sup> Percentile (FC/100mL)	Meets Standard
55	Approved	2/25/2019 - 12/19/2023	1.7 - 49.0	2.1	4.7	Y
56	Approved	2/25/2019 - 12/19/2023	1.7 - 2.0	1.7	1.8	Y
57	Approved	2/25/2019 - 12/19/2023	1.7 - 2.0	1.7	1.9	Y
58	Approved	2/25/2019 - 12/19/2023	1.7 - 49.0	2.2	5.7	Y
59	Approved	2/25/2019 - 12/19/2023	1.7 - 49.0	2.1	5.0	Y
60	Approved	2/25/2019 - 12/19/2023	1.7 - 49.0	2.2	5.8	Y
61	Approved	2/25/2019 - 12/19/2023	1.7 - 6.8	1.8	2.5	Y
62	Approved	2/25/2019 - 12/19/2023	1.7 - 7.8	2.1	3.5	Y
63	Approved	2/25/2019 - 12/19/2023	1.7 - 6.8	1.9	2.8	Y
64	Approved	2/25/2019 - 12/19/2023	1.7 - 13.0	2.1	3.8	Y
65	Approved	2/25/2019 - 12/19/2023	1.7 - 170.0	2.1	6.8	Y
66	Approved	2/25/2019 - 12/19/2023	1.7 - 9.2	2.1	3.9	Y
67	Approved	2/25/2019 - 12/19/2023	1.7 - 23.0	3.3	9.7	Y
311	Approved	2/25/2019 - 12/19/2023	1.7 - 13.0	2.5	5.5	Y

The standard for approved shellfish growing waters is fecal coliform geometric mean not greater than 14 organisms/ 100 mL with an estimated 90th percentile not greater than 43 organisms/ 100 mL. The above table shows bacteriological results in relation to program standards.

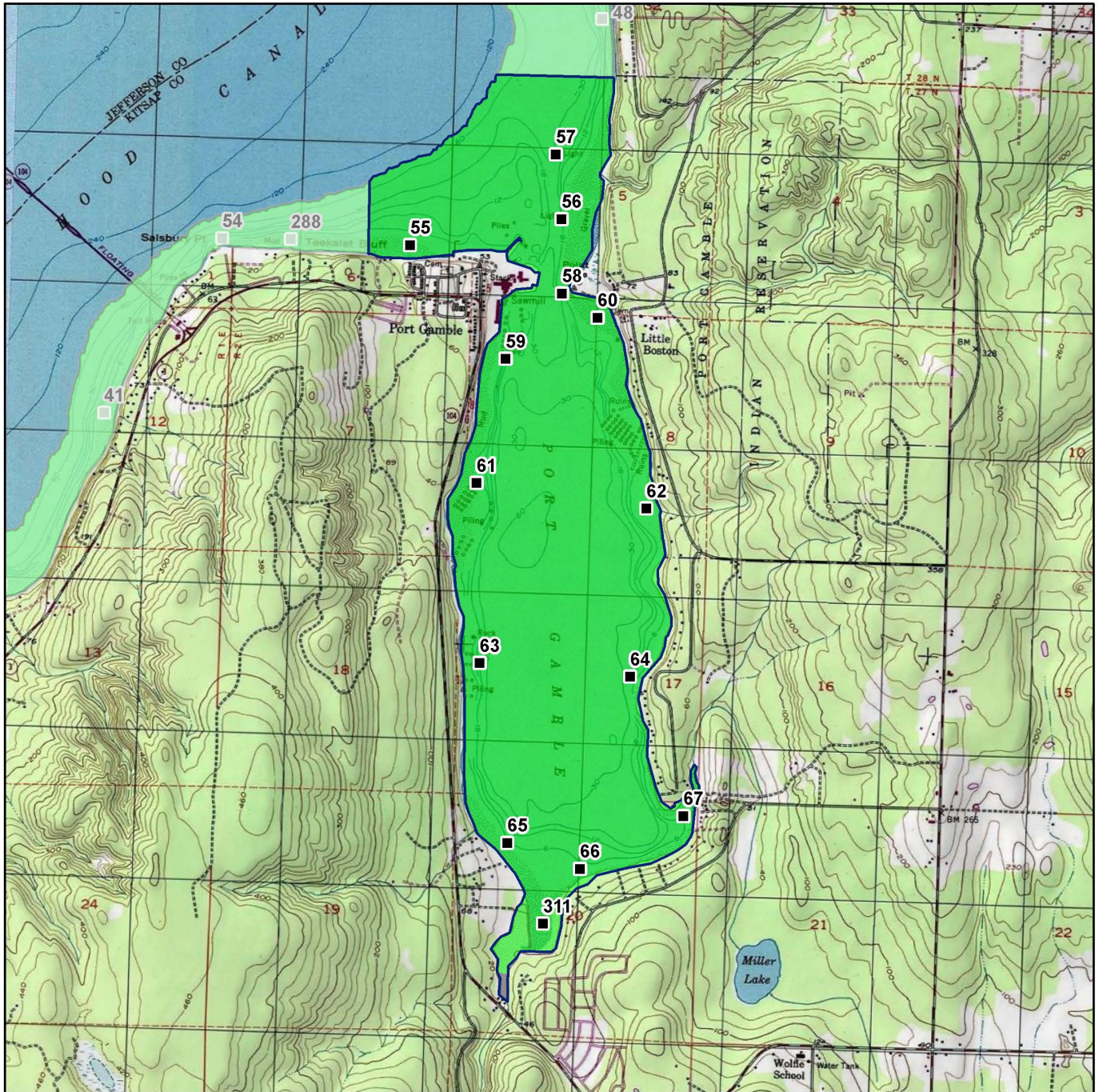
MAP 1. Port Gamble Growing Area

Port Gamble

0 1 2 Miles

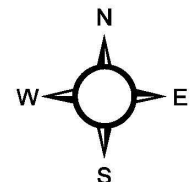


Date Updated: 7/11/2018



- Classification**
- Approved
  - Conditional
  - Prohibited
  - Restricted
  - Unclassified

- Sampling Stations**
- 



\* Some sampling stations are highlighted with grey box for ease of reading.