

Franklin County

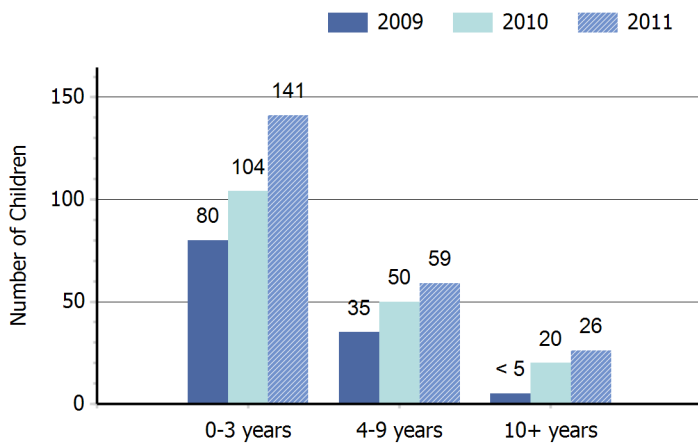
Profile of Children and Youth with Special Health Care Needs

Population of Children 0-19 Years by Age Group and Year

Age Group	1990	2000	2008	2009
0-4 years	3,618	4,933	6,924	7,222
5-9 years	3,943	4,861	6,234	6,439
10-14 years	3,507	4,466	5,715	5,867
15-19 years	3,137	4,503	6,369	6,513
Total	14,205	18,763	25,242	26,041

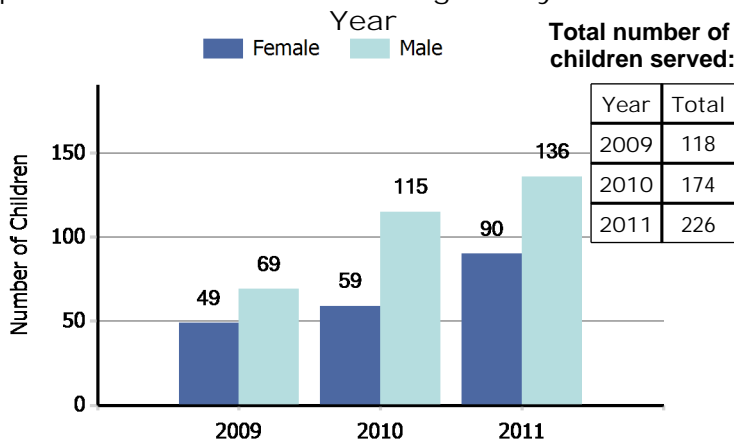
Source: Community Health Assessment Tool (CHAT), 1990-2009 Population Estimates: Population Estimates for Public Health Assessment, Washington State Department of Health and Krupski Consulting, December 2009. Accessed 12/9/11.

Number¹ of Children Served by Children with Special Health Care Needs Program by Age Group and Year



¹The number of children served by age may not equal the total number of children served due to non-reporting of age for some cases. Source: Child Health Intake Forms, Children with Special Health Care Needs Program, Washington State Department of Health, 5/15/12.

Number² of Children Served by Children with Special Health Care Needs Program by Gender and Year

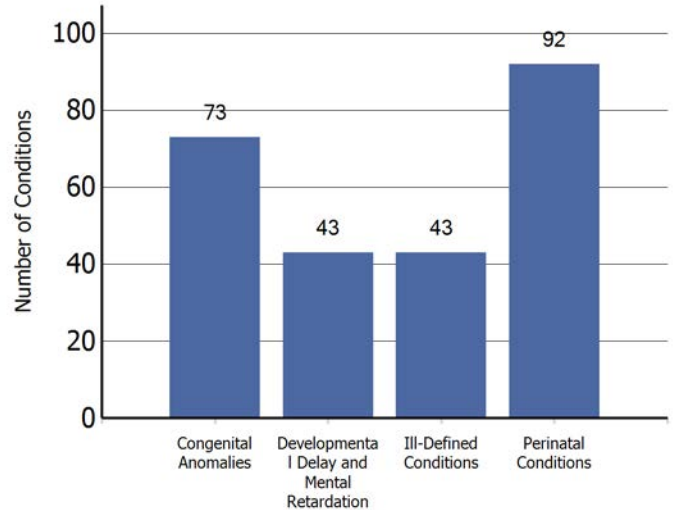


²The number of children served by gender may not equal the total number of children served due to non-reporting of gender for some cases. Source: Child Health Intake Forms, Children with Special Health Care Needs Program, Washington State Department of Health, 5/15/12.

"Children with special health care needs are children who have, or are at increased risk for, chronic physical, developmental, behavioral, or emotional conditions and who also require health and related services of a type or amount beyond that required by children generally."

(Maternal and Child Health Bureau)

Leading Four Diagnostic Categories³ among Children Served by the Children with Special Health Care Needs Program: 2011



³ Child may have multiple conditions.

Source: Child Health Intake Forms, Children with Special Health Care Needs Program, Washington State Department of Health, 5/15/12.

Number of Children in Special Education Services under the Individuals with Disabilities Education Act (IDEA) Part B, as of December 1, 2010

Diagnostic Category	Number
Specific Learning Disability	1,010
Communication Disorder	319
Health Impairment	286
Developmental Delay - Preschool	219
Intellectual Disabilities	81
Autism	78
Emotional/Behavioral Disability	48
Hearing Impairment	22
Deafness	18
Multiple Disabilities	16
Visual Impairments	13
Orthopedic Impairment	11
Deaf - Blindness	<5
Traumatic Brain Injury	<5
TOTAL	2,121

Source: Office of Superintendent of Public Instruction, Special Education Child County and Placement Data, 1/3/12.

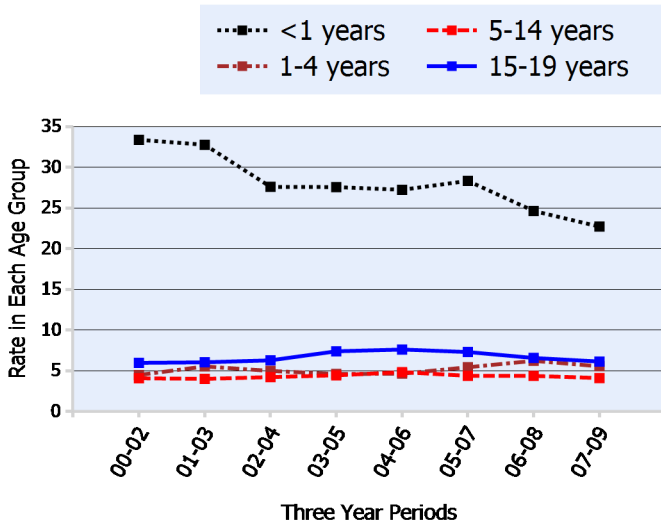
This county profile is part of the Children and Youth with Special Health Care Needs: Washington State Report. For more information, contact the Children with Special Health Care Needs Program at (360) 236-3571.

Number⁴ of Children Age 0-35 Months with an Individualized Family Service Plan Who Received Early Intervention Services

July 2009 - June 2010	264
July 2010 - June 2011	296

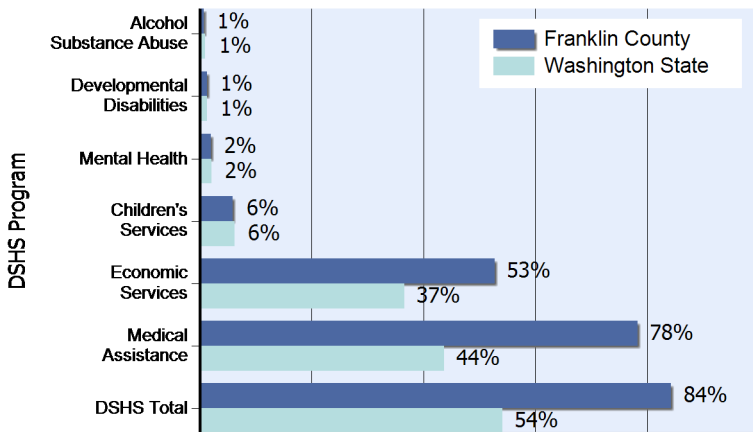
⁴Unduplicated count from Benton and Franklin Counties.
Source: Early Support for Infants and Toddlers (ESIT), Washington State Department of Early Learning, Accessed 11/15/11. Program information and data are available at: <http://www.del.wa.gov/publications/esit/Default.aspx>.

Age-Specific Hospitalization Rate⁶ for Chronic Conditions per 1,000 Children Ages 0-19



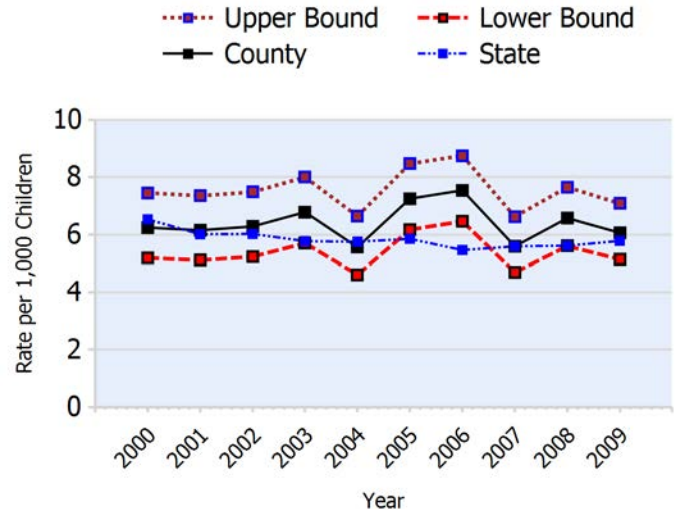
⁶ Number of hospitalizations per 1,000 population of children in each age group calculated as three-year rolling averages.
Source: Community Health Assessment Tool (CHAT), Hospitalization Discharge Data: Comprehensive Hospital Abstract Reporting System (CHARS), Washington State Department of Health, Center for Health Statistics, Accessed 9/21/11.

Percent of Children Age 0-17 in Programs of the Department of Social and Health Services:⁷ June 2007 - July 2008



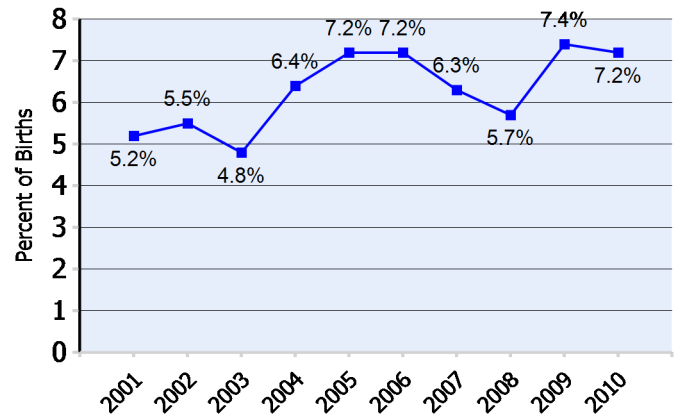
⁷Based upon unduplicated count of children within each service category.
Source: Client Services Database, Research and Data Analysis Division, Department of Social and Health Services, Accessed 11/15/11.
Note: In 2010, the Medical Assistance program moved from the Washington State Department of Social and Health Services to the Health Care Authority. Client data and program descriptions are available at <http://clientdata.rda.dshs.wa.gov/>.

Hospitalization Rate⁸ for Chronic Conditions per 1,000 Children Age 0-19 Years



⁸Number of hospitalizations per 1,000 population of children 0-19.
Source: Community Health Assessment Tool (CHAT), Hospitalization Discharge Data: Comprehensive Hospital Abstract Reporting System (CHARS), Washington State Department of Health, Center for Health Statistics, Accessed 9/21/11.

Number and Percent⁵ of Babies Born with Low Birth Weight (less than 2,500 grams)



⁵ Percent of births for which the birthweight is known.
Source: Washington State Birth Files, Washington State Department of Health, 11/15/11.

Number of Children 0-17 in DSHS Programs:		Year LBW All Births	
Alcohol Substance Abuse	160	2001	60 1,147
Developmental Disabilities	295	2002	65 1,189
Mental Health	449	2003	63 1,322
Children's Services	1,348	2004	85 1,320
Economic Services	12,020	2005	106 1,481
Medical Assistance	17,870	2006	110 1,534
DSHS Total	19,227	2007	100 1,583
		2008	94 1,654
		2009	124 1,686
		2010	120 1,661

