

COVID-19 Long-term Care Report

Washington State Department of Health

12/08/2020

COVID-19 surveillance data are updated when new information about a case is reported, such as exposure and case information. Given the dynamic nature of COVID-19 surveillance data, data reported in the past may not match data reported in present time. Facilities with multiple acuity levels are assigned to the highest acuity level. Additionally, there may be a large reporting delay. The number of cases and deaths associated with long-term care (LTC) may not be complete for the last several weeks.

To request this document in another format, call 1-800-525-0127. Deaf or hard of hearing customers, please call 711 (Washington Relay) or email civil.rights@doh.wa.gov. Publication Number DOH 420-285.

The data in this report is reflective of all cases reported as of 12/07/2020.

Summary

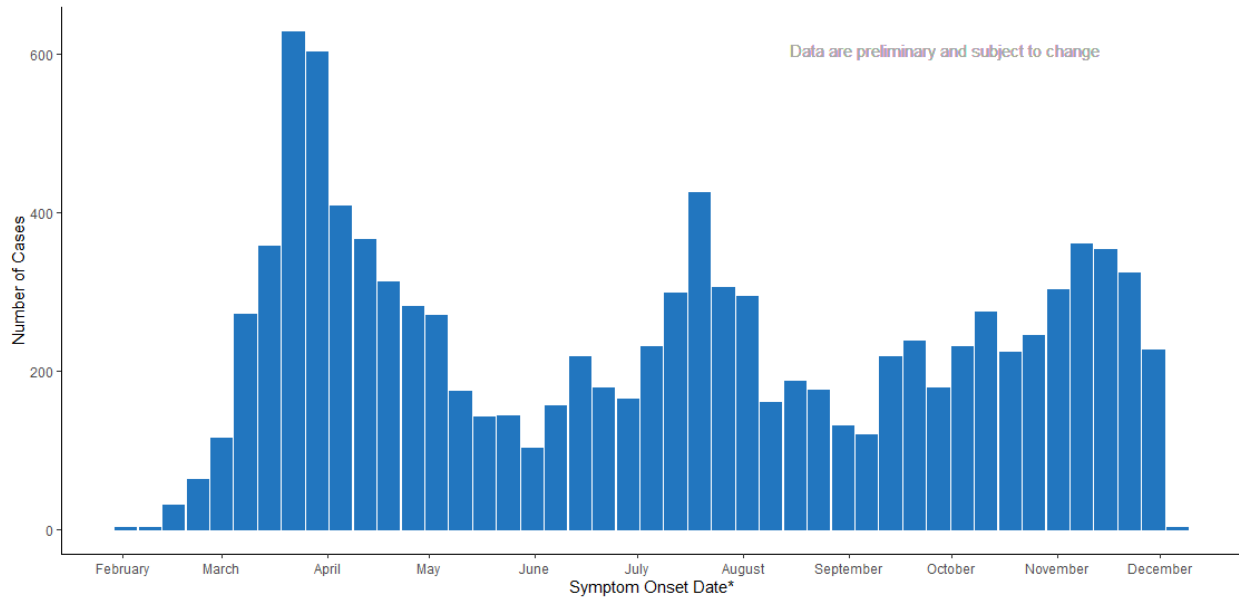
Total LTC Associated Cases: 10,492

Total LTC Associated Deaths: 1,523

As of 12/07/2020, a total of 10,492 COVID-19 cases (6% of total cases) and 1,523 deaths (52% of total deaths) have been identified as associated with a long-term care facility (i.e., nursing home, assisted living facility or adult family home). These cases include residents as well as employees and visitors. Not all of these cases were exposed at a LTC facility. Many cases visited multiple places during their exposure period, and some individuals may have visited a LTC facility after disease onset.

LTC Associated Cases by Illness Onset Date

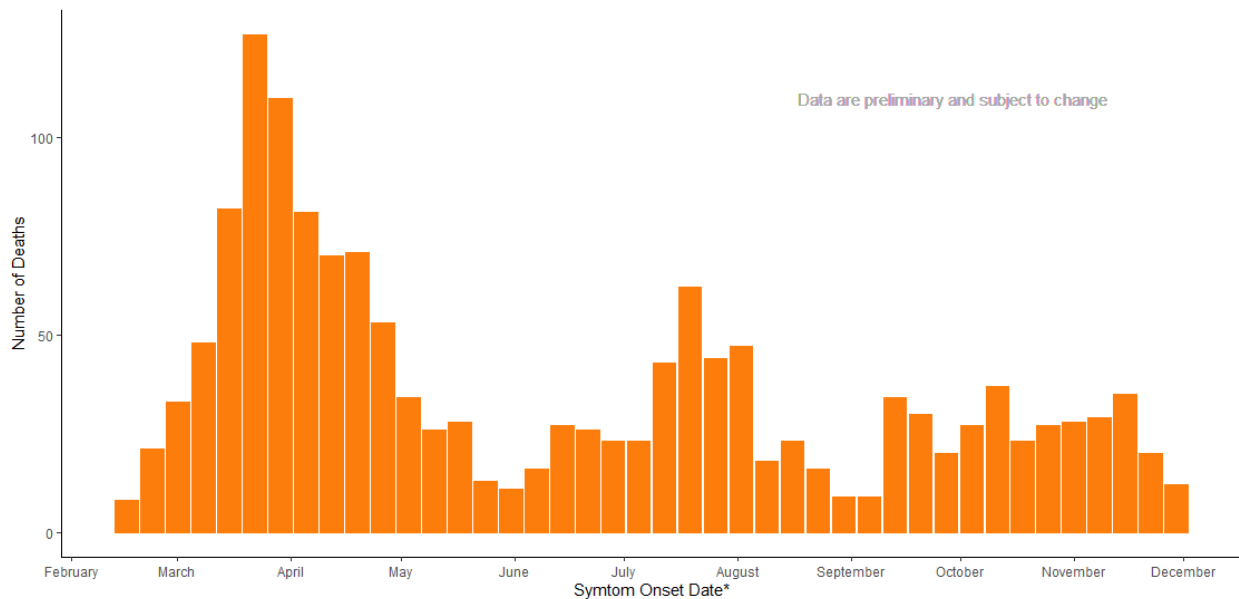
This epidemiologic curve shows the number of LTC associated cases over time in weeks by onset date. If onset date is not known, diagnosis date or report date are used. Since there may be reporting delays, data are incomplete for the most recent weeks.



*If onset date is not known, diagnosis date or report date are used

Deaths with LTC Association by Illness Onset Date

This epidemiologic curve shows the number of deaths reported as having an association to long-term care by onset date in weeks. If onset date is not known, diagnosis date or report date are used. Since there may be reporting delays, data are incomplete for the most recent weeks.



*If onset date is not known, diagnosis date or report date are used

Confirmed LTC Associated Cases and Deaths by County

This table displays the number of COVID-19 cases and deaths that have a reported associated with LTC in Washington State by county. Data are preliminary and subject to change. Cases are attributed to their county of residence, not the county in which the facility they are associated with is located.

County	Total LTC Associated Deaths	Total LTC Associated Cases
Adams	4	43
Asotin	3	39
Benton	80	468
Chelan	15	167
Clallam	1	17
Clark	32	226
Columbia	0	2
Cowlitz	2	33
Douglas	2	20
Ferry	0	0
Franklin	17	172
Garfield	0	0
Grant	12	79
Grays Harbor	7	86
Island	14	129
Jefferson	1	9
King	548	3,137
Kitsap	12	104
Kittitas	21	139
Klickitat	0	1
Lewis	13	162
Lincoln	1	14
Mason	7	56
Okanogan	1	2
Pacific	0	3
Pend Oreille	0	3
Pierce	142	985
San Juan	0	1
Skagit	19	193
Skamania	0	2

County	Total LTC Associated Deaths	Total LTC Associated Cases
Snohomish	160	1190
Spokane	174	1087
Stevens	1	37
Thurston	23	265
Wahkiakum	0	0
Walla Walla	16	227
Whatcom	40	254
Whitman	21	133
Yakima	134	1007