



Baijen ko

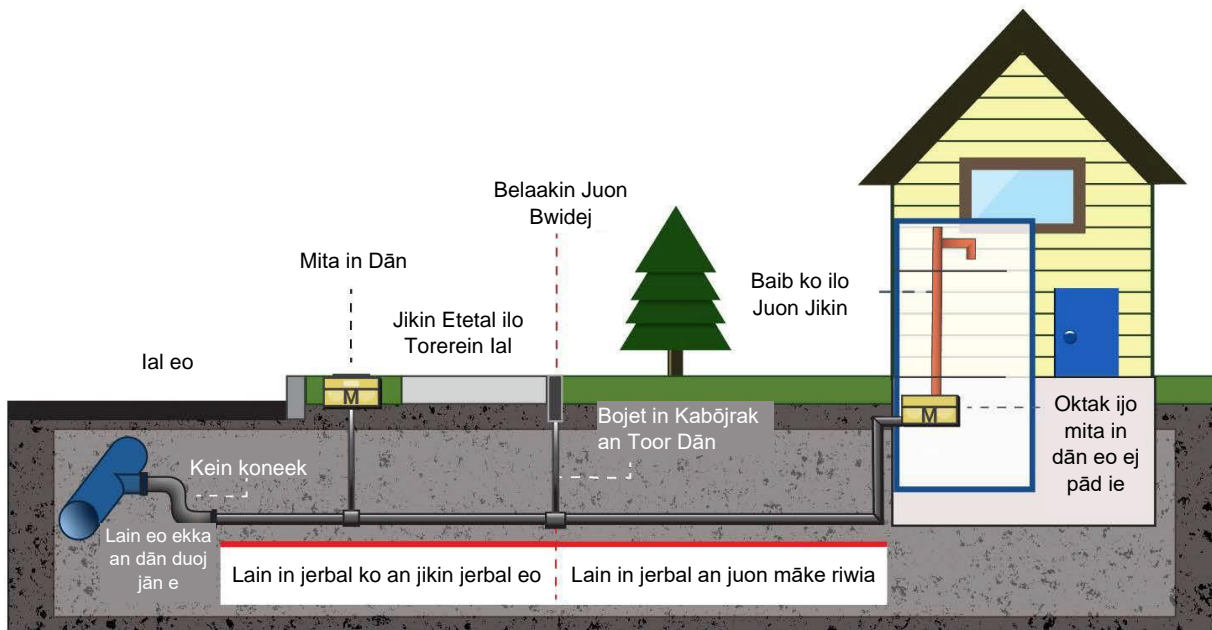
# Lead Service Line Inventory Customer Survey Form

331-746 • 4/15/2024 Marshallese

Ñan ad loore Environmental Protection Agency (EPA, Agency in Kōjbarok Ta ko Belaakid) kakien, jermal ko ikijen dān ko an loblej ej aikuj ñan an dedelak lain in jermal ko an riwia ro. Laajrak in kajitok in elap an jibāñ ikijen dān ko an loblej bwe en lorlorjake jekjek in ilo an jimwe. Kōmmelele kein ilal renij jibāñ eok kalikkar ta eo lain in jermal e dān eo am ej kōmman jān e.

## Bukwot Lain in Jermal Dān eo Am

Mokta jān am kanne laajrak in kajitok kein, kwoj aikuj kalikkar ia eo lain in jermal e dān eo am ej pād e im waween an koneek ñan mweo imōm. Ñe kwoj aikuj jibāñ bukot lain in jermal eo am, topar lak jikin jermal e dān ko an loblej ilo [jiped ijin ñan kadelon melele ko ikijen topar jikin jermal dān](#).



## Mita in Dān ilo Naboj ak Bojet in Kabōjrak an Toor Dān

Ñan bukot ia eo lain in jermal an dān ej deloñ ilo mweo imōm, kabbok mita in dān im bojet in kabōjrak an toor dān. Ekka an walok ilo maan in bwidej eo am turin ial eo ak jikin etetal ko torerein ial im rej pād ilo boḷok ko lal emōj kakōlle "dān" ak "mita". Elikin am lore ir, loore ial eo ekadu tata ñan mweo imōm. Lain in jermal eo an dān ej aikuj deloñ ilowaan mweo jān tulal ak dāpin mweo ilo jikin in.



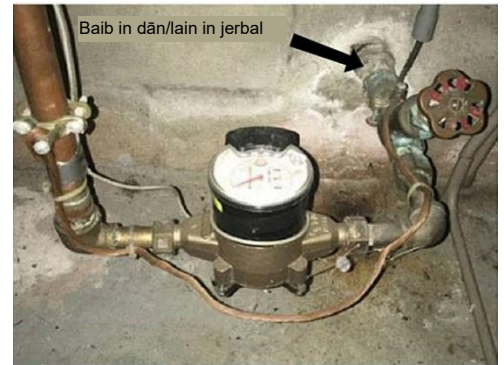
## Teej e ta eo Baib eo ej Kōmman jān E

Ñe emōj am lore ia eo lain in jermal dān eo ej deloñ ilo mweo imōm, kabbok juon jikin ilo baib eo epāake tata dāpin mweo ak tulal mokta jān an koneek ñan juon bojet ak mita. Ilo ijin, komaroñ teej e ta eo baib eo ej kōmman jān e. Aurok bwe kwon bukot baib eo ej deloñ ilo mweo imōm.

## Teej e Kein Jermal ko

Kōjerbale kein jermal kein emōj laajrak ñan kalikkar ta eo baib eo ilo lain in jermal dān eo ej kōmman jān e.

- ◆ **Jitūul an aij boq ak bar jōt kain jitūul**—kōjerbale ñan teej ñe baib eo ej kōmman jān steel ak aen.
- ◆ **Kein jikuru ak jān deka**—ñan kwalōk lukkun kolar in baib eo ñan kwalōk kolar in aen eo im joñan ben im lale ainikien.
- ◆ **Teñki ak cell phone**—kōjerbale meram ñan lale baib eo.
- ◆ **Lead**—Teej in Lale Kurar: Ebidodo an kurar. Ñe jikin eo ekurar errabōlbōl im jelba, baib eo ej lead. Teej in Jitūul: Juon jitūul eban eddep ñan juon lead baib. Teej in Lale Ainikien: Teej in lale ainikien juon lead baib kin juon jān deka enij kōmman juon ainikien eo edik.
- ◆ **Koba**—Teej in Lale Kurar: Ñe jikin eo ekurar ej kolar in koba, āinwot juon jān koba, baib eo ej koba. Teej in Jitūul: Juon jitūul eban eddep ñan juon baib kōba. Teej in Lale Ainikien: Lale ainikien juon baib koba kin juon jān deka enij kōmmane juon ainikien aen eo ej riñ.
- ◆ **Galvanized Steel ak Aen**—Teej in Lale Kurar. Ñe jikin eo ekurar ej pād wōt ilo an kure, baib eo ej galvanized steel. Teej in Jitūul: Juon jitūul ej eddep ñan juon baib eo ebin. Teej in Lale Ainikien: Lale ainikien juon baib eo ebin kin juon jān deka enij kōmmane juon aikien aen eo ej riñ.
- ◆ **Būlajtiik**—Baib in ej kōmman jān eloñ kain im kolar. Babe eo ejjab kōmman juon ainikien eo ej riñ ñe ej lale ainikien kin juon jān deka ak kein jikuru.



Būlajtiik



Koba



Galvanized Steel & bojet



Lead eo emōj an kurar

# Laajrak in Kajitok ikijen Jerbal ko an Lain in Dān an Riwia

## Melele ko ikijen Jikin

**Jikin Jokwe:** Jiped ijin ñan likit jeje.

**Kiaptōl:** Jiped ijin ñan likit jeje.

**Zip code eo:** Jiped ijin ñan likit jeje.

## Jouj uak e laajrak in kajitok kein.

**Am māke ijin ke ak kwoj reen e?**

Aō māke

Reen

**Yiio ta eo mwiin ekar ekkal?** Jiped ijin ñan likit jeje.

**Ilo jella eo am māke, emōj ke an kakaal lain in jербal e dān ilo mweo imōm juon alen?**

Aet

**Yiio ta eo mwiin ekar kakaal?** Jiped ijin ñan likit jeje.

Jab

Jab jella

**Ta eo lain in jербal e dān eo am ej kōmman jān e? Komaroñ kelet elaplok jān juon.**

Lead

Koba

Steel (baib ej kōmman jān aen, galvanized)

Būļajtiik (HDPE, PVC)

Jab jella

Jab maroñ bukot lain in jербal

**Ewi waween am jella ta eo ej kōmman jān e? Kelet juon.**

Teej in Lale Kurar

Am kalimjok e

Jab maroñ bukot lain in jербal

Juon rijербal eo elap an jella kin baib ak juon bar rijербal eo elap jella ippān

**Koṃṃool. Jouj im karoltok laajrak in kajitok kein ñan armij in emōj karōk e ilal.**

Likit waween topar eo ilo jербal ko an dān.

## Ñan Melele ko Relaplak

Bukot elaplok kein jibãñ ilo [Ta ko Kōbban Lain in Jerbal iumin Lead—EPA webjait ikijen Lead im Kōba Kakien ko Emōj kakaal](#) (ilo Kajin Pälle).

## Webjait Atōrej eo an Jerbal in Dān ko an Loblej

Likit webjait URL eo an jikin jermal in dān ijin.



Ñan kajjitōk bwe ren lewōj peba in ilo bar juon wāwein, kwōn ka||ok 1-800-525-0127. Armej ro rej jarroñroñ ren ka||ok 711 (Washington Relay) ak email [doh.information@doh.wa.gov](mailto:doh.information@doh.wa.gov). Ñe kwoj aikuj jermal in ukok kajin, kurlok 1-800-525-0127.