

# Annas Bay

## Annual Shellfish Growing Area Review



Prepared By: Trevor Swanson

Area: Annas Bay

Year Ending: December 31, 2024

Classification: Approved, Conditionally Approved, Restricted

### Activities in the Growing Area in 2024

The growing area was sampled 11 times in accordance with National Shellfish Sanitation Program (NSSP) Systematic Random Sampling (SRS) criteria. Six sampling events occurred during Open status. The Conditionally Approved portion of the growing area was closed six times for 161 days due to Skokomish River flooding. The Hood Canal Marina area was closed May through September based on boat moorage. Currently, there are no approved relays in the Restricted portion.

The July 2024 sanitary survey reclassified a 245-acre portion of the western Conditionally Approved area to Approved, including stations 199, 200, and 323, due to improved water quality and other factors. In addition, closure criteria (based on Skokomish River streamgage height) of the remaining Conditionally Approved areas were revised as follows:

May through December: The Conditionally Approved areas will be closed whenever the Skokomish River exceeds 15 feet on the USGS streamgage near Potlatch. Closures last 7 days after the river drops below 15 feet.

January through April: The Conditionally Approved areas will be closed whenever the Skokomish River exceeds 17 feet on the USGS streamgage near Potlatch. Closures last 7 days after the river drops below 17 feet.

This sanitary report also changed the closed period of the Hood Canal Marina Conditionally Approved area from May 1 through November 30 to May 1 through September 30 each year due to decreased boating activities in October and November.

The Mason Clean Water District continued to implement the 2018 closure response plan. The Hood Canal Regional PIC workgroup continued to meet.

### Analytical Results of Water Samples

Table 1 summarizes the most recent 30 samples collected from each of the sampling stations. It includes 13 sampling events when the Conditionally Approved area was closed to harvest due to the Skokomish River condition. Table 2 shows the Conditionally Approved stations during Open status. All stations meet NSSP standards.

Although sorting data at stations 195 and 300, as shown in Table 2, increases the estimated 90<sup>th</sup> percentile (E90th) when compared to unsorted data, it decreases the E90th at 196, 197, 206, and 299. All stations, when sorted, have an E90th of under 30 FC/100mL.

### Change in Actual Pollution Sources that Impact the Growing Area

We currently have no information indicating the area has any new sources of pollution.

### Classification Status

- ☒ Well within the classification standards
- ☐ Meets standards, but threatened with downgrade in classification
- ☐ Fails to meet current classification standards

## Remarks and Recommendations

Although sorting data increases the E90th at two of six stations in the Conditionally Approved area, due to the potential for pollution impacts from the Skokomish River during higher flows, the condition continues to be appropriate.

The Department should continue to work with Mason County, the Skokomish Tribe, and others to identify and correct sources of pollution in the Annas Bay watershed.

## Management Plan Evaluation

1. Have all parties involved complied with the conditions of the management plan..... Yes
2. Has reporting been adequate to manage the conditional area..... Yes
3. Does the area consistently meet approved area criteria when it is open for harvest..... Yes
4. Has a field inspection of critical pollution sources been conducted..... Yes

**TABLE 1. Summary of Marine Water Data (SRS) for the Annas Bay Growing Area**

Sampling Event Type: Regulatory

Maximum Number of Samples: 30

Tides Included: All

Station Number	Classification	Date Range	Range (FC/100mL)	Geomean (FC/100mL)	Est. 90 <sup>th</sup> Percentile (FC/100mL)	Meets Standard
199	Approved	6/23/2022 - 12/12/2024	1.7 - 33.0	3.7	13.7	Y
200	Approved	6/23/2022 - 12/12/2024	1.7 - 23.0	2.6	6.6	Y
201	Approved	6/23/2022 - 12/12/2024	1.7 - 17.0	2.4	4.9	Y
202	Approved	6/23/2022 - 12/12/2024	1.7 - 540.0	4.0	22.7	Y
203	Approved	6/23/2022 - 12/12/2024	1.7 - 21.0	3.0	8.9	Y
204	Approved	6/23/2022 - 12/12/2024	1.7 - 13.0	2.4	5.0	Y
323	Approved	6/23/2022 - 12/12/2024	1.7 - 49.0	2.6	7.4	Y
195	Conditionally Approved	6/23/2022 - 12/12/2024	1.7 - 49.0	4.4	15.8	Y
196	Conditionally Approved	6/23/2022 - 12/12/2024	1.7 - 130.0	3.8	16.6	Y
197	Conditionally Approved	6/23/2022 - 12/12/2024	1.7 - 79.0	7.8	29.4	Y
206	Conditionally Approved	6/23/2022 - 12/12/2024	1.7 - 26.0	5.4	18.3	Y
299	Conditionally Approved	6/23/2022 - 12/12/2024	1.7 - 49.0	5.3	21.2	Y
300	Conditionally Approved	6/23/2022 - 12/12/2024	1.7 - 79.0	4.3	17.4	Y
198	Restricted	6/23/2022 - 12/12/2024	1.7 - 79.0	11.3	51.9	N
314	Restricted	6/23/2022 - 12/12/2024	1.7 - 46.0	9.8	33.5	Y

The standard for Approved shellfish growing waters is a fecal coliform geometric mean not greater than 14 organisms/ 100 mL with an estimated 90th percentile not greater than 43 organisms/ 100 mL. The above table shows bacteriological results in relation to program standards.

**TABLE 2. Summary of Sorted Marine Water Data for the Conditionally Approved Stations in the Annas Bay Growing Area**

Sampling Event Type: Regulatory

Maximum Number of Samples: 30

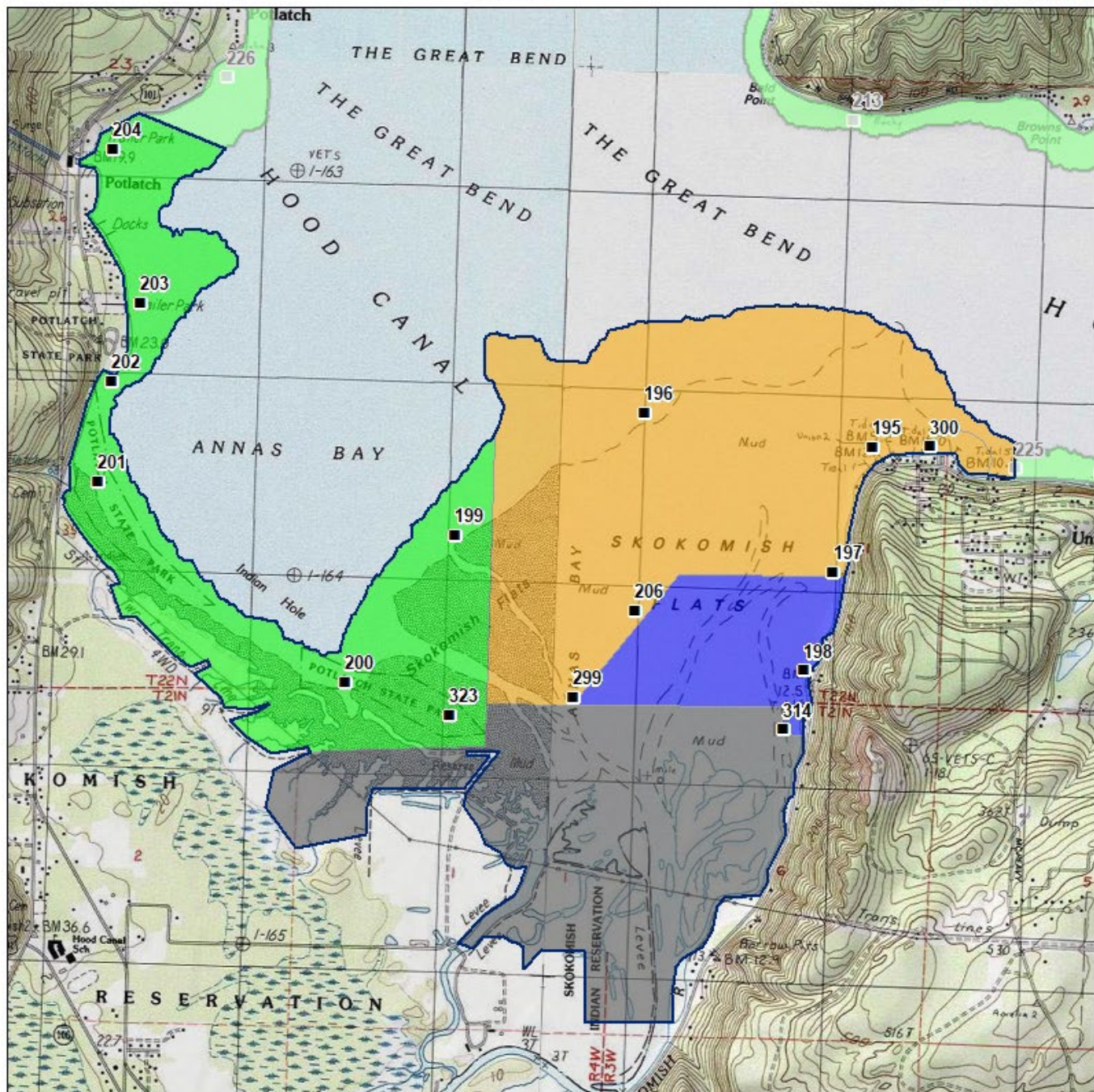
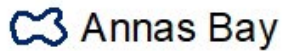
Tides Included: All

Data collected during Skokomish River flooding closures is not included.

Station Number	Classification	Date Range	Range (FC/100mL)	Geomean (FC/100mL)	Est. 90 <sup>th</sup> Percentile (FC/100mL)	Meets Standard
195	Conditionally Approved	9/23/2020 – 12/12/2024	1.7 - 64.0	6.2	26.9	Y
196	Conditionally Approved	9/23/2020 – 12/12/2024	1.7 - 130	3.1	12.2	Y
197	Conditionally Approved	9/23/2020 – 12/12/2024	1.7 - 79.0	6.7	25.2	Y
206	Conditionally Approved	9/23/2020 – 12/12/2024	1.7 - 26.0	3.9	13.4	Y
299	Conditionally Approved	9/23/2020 – 12/12/2024	1.7 - 49.0	3.7	12.4	Y
300	Conditionally Approved	9/23/2020 – 12/12/2024	1.7 - 79.0	4.4	22.3	Y

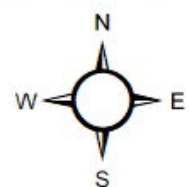
The standard for Approved shellfish growing waters is a fecal coliform geometric mean not greater than 14 organisms/ 100 mL with an estimated 90th percentile not greater than 43 organisms/ 100 mL. The above table shows bacteriological results in relation to program standards.

## MAP 1. Annas Bay Growing Area



Classification	Sampling Stations
1. <b>Surface Water</b>	1. <b>Station 1</b>
2. <b>Groundwater</b>	2. <b>Station 2</b>
3. <b>Bottom Sediment</b>	3. <b>Station 3</b>
4. <b>Biological</b>	4. <b>Station 4</b>
5. <b>Atmospheric</b>	5. <b>Station 5</b>

- |   |              |
|---|--------------|
|  | Approved     |
|  | Conditional  |
|  | Prohibited   |
|  | Restricted   |
|  | Unclassified |



\* Some sampling stations are highlighted with grey box for ease of reading.