

# East Passage

## Annual Shellfish Growing Area Review



Prepared By: Michael Ulrich

Area: East Passage

Year Ending: December 31, 2024

Classification: Approved, Prohibited

### Activities in the Growing Area in 2024

The growing area was sampled six times in accordance with the National Shellfish Sanitation Program (NSSP) Systematic Random Sampling criteria. A routine three-year shoreline evaluation was completed and no new or changes in pollution sources were identified. A reliability evaluation of the Vashon Island WWTP was completed. No changes to the classification were needed. A comprehensive evaluation report is in the central growing area file.

Sampling at Marine Station 380 was stopped due to its location, marine water quality, and the relationship with neighboring stations.

### Analytical Results of Water Samples

Table 1 summarizes the results of the last 30 samples collected from the area. This summary shows that all stations pass the NSSP water quality standard.

### Change in Actual Pollution Sources that Impact the Growing Area

We currently have no information indicating that the area has new sources of pollution.

### Classification Status

- ☒ Well within the classification standards
- ☐ Meets standards, but threatened with downgrade in classification
- ☐ Fails to meet current classification standards

### Remarks and Recommendations

Table 1 shows that all stations meet the NSSP water quality standard for an Approved classification and the area is correctly classified.

**TABLE 1. Summary of Marine Water Data (SRS) for the East Passage Growing Area**

Sampling Event Type: Regulatory

Maximum Number of Samples: 30

Tides Included: All

Station Number	Classification	Date Range	Range (FC/100mL)	Geomean (FC/100mL)	Est. 90 <sup>th</sup> Percentile (FC/100mL)	Meets Standard
375	Approved	2/20/2020 - 12/12/2024	1.7 - 23.0	2.0	4.2	Y
376	Approved	2/20/2020 - 12/12/2024	1.7 - 5.6	1.9	2.7	Y
377	Approved	2/20/2020 - 12/12/2024	1.7 - 4.5	1.9	2.6	Y
378	Approved	2/20/2020 - 12/12/2024	1.7 - 4.0	1.8	2.2	Y
379	Approved	2/20/2020 - 12/12/2024	1.7 - 49.0	2.0	4.7	Y
381	Approved	2/20/2020 - 12/12/2024	1.7 - 23.0	2.2	4.5	Y
382	Approved	2/20/2020 - 12/12/2024	1.7 - 23.0	2.0	3.9	Y
383	Approved	2/20/2020 - 12/12/2024	1.7 - 13.0	2.0	3.8	Y
384	Approved	2/20/2020 - 12/12/2024	1.7 - 6.8	1.9	2.8	Y
385	Approved	2/20/2020 - 12/12/2024	1.7 - 11.0	2.0	3.6	Y
386	Approved	2/20/2020 - 12/12/2024	1.7 - 33.0	2.0	4.3	Y
387	Approved	2/20/2020 - 12/12/2024	1.7 - 7.8	1.8	2.6	Y
388	Approved	2/20/2020 - 12/12/2024	1.7 - 4.0	1.8	2.2	Y
389	Approved	2/20/2020 - 12/12/2024	1.7 - 11.0	2.0	3.5	Y
390	Approved	2/20/2020 - 12/12/2024	1.7 - 11.0	2.0	3.6	Y
391	Approved	2/20/2020 - 12/12/2024	1.7 - 23.0	2.0	3.9	Y
392	Approved	2/20/2020 - 12/12/2024	1.7 - 49.0	2.6	7.1	Y
393	Approved	2/20/2020 - 12/12/2024	1.7 - 79.0	2.5	7.0	Y
394	Approved	2/20/2020 - 12/12/2024	1.7 - 11.0	2.1	3.7	Y
395	Approved	2/20/2020 - 12/12/2024	1.7 - 79.0	2.7	8.9	Y
600	Approved	2/20/2020 - 12/12/2024	1.7 - 33.0	2.2	5.1	Y
647	Approved	4/16/2020 - 12/12/2024	1.7 - 23.0	2.6	7.4	Y

Station Number	Classification	Date Range	Range (FC/100mL)	Geomean (FC/100mL)	Est. 90 <sup>th</sup> Percentile (FC/100mL)	Meets Standard
676	Approved	2/20/2020 - 12/12/2024	1.7 - 33.0	2.2	5.3	Y
696	Approved	2/20/2020 - 12/12/2024	1.7 - 17.0	2.1	4.4	Y
675	Prohibited	2/20/2020 - 12/12/2024	1.7 - 7.8	2.0	3.2	Y
697	Unclassified	11/14/2019 - 12/12/2024	1.7 - 7.8	2.0	3.3	Y

The standard for approved shellfish growing waters is fecal coliform geometric mean not greater than 14 organisms/ 100 mL with an estimated 90th percentile not greater than 43 organisms/ 100 mL. The above table shows bacteriological results in relation to program standards.

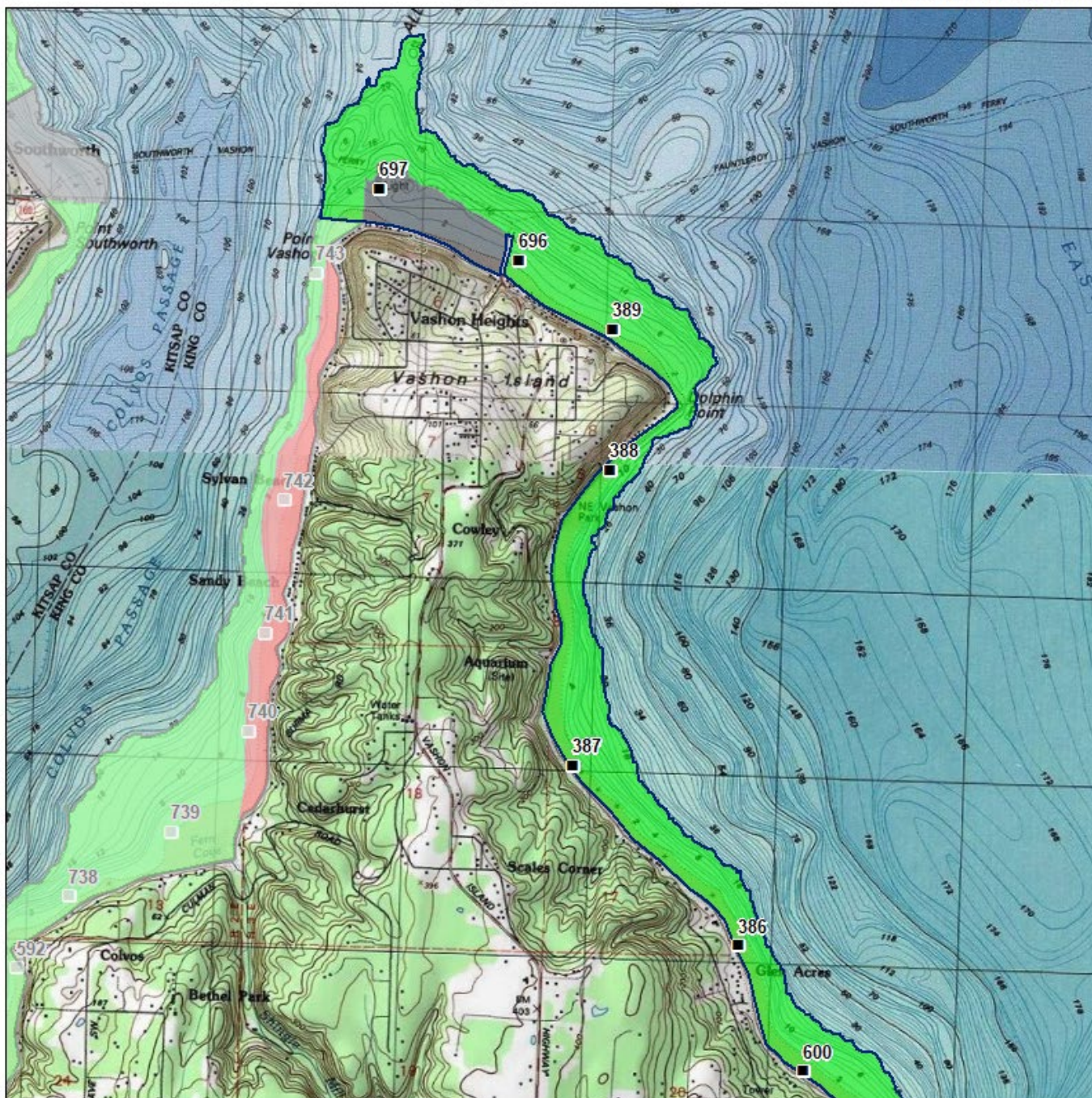
# MAP 1. East Passage Growing Area

East Passage (1 of 4)



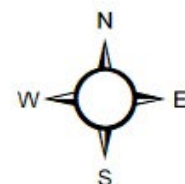
Date Updated: 2/9/2023

0 0.75 1.5 Miles



Classification	
<span style="display:inline-block; width:15px; height:15px; background-color:green; border:1px solid black;"></span>	Approved
<span style="display:inline-block; width:15px; height:15px; background-color:orange; border:1px solid black;"></span>	Conditional
<span style="display:inline-block; width:15px; height:15px; background-color:red; border:1px solid black;"></span>	Prohibited
<span style="display:inline-block; width:15px; height:15px; background-color:blue; border:1px solid black;"></span>	Restricted
<span style="display:inline-block; width:15px; height:15px; background-color:grey; border:1px solid black;"></span>	Unclassified

Sampling Stations



\* Some sampling stations are highlighted with grey box for ease of reading.

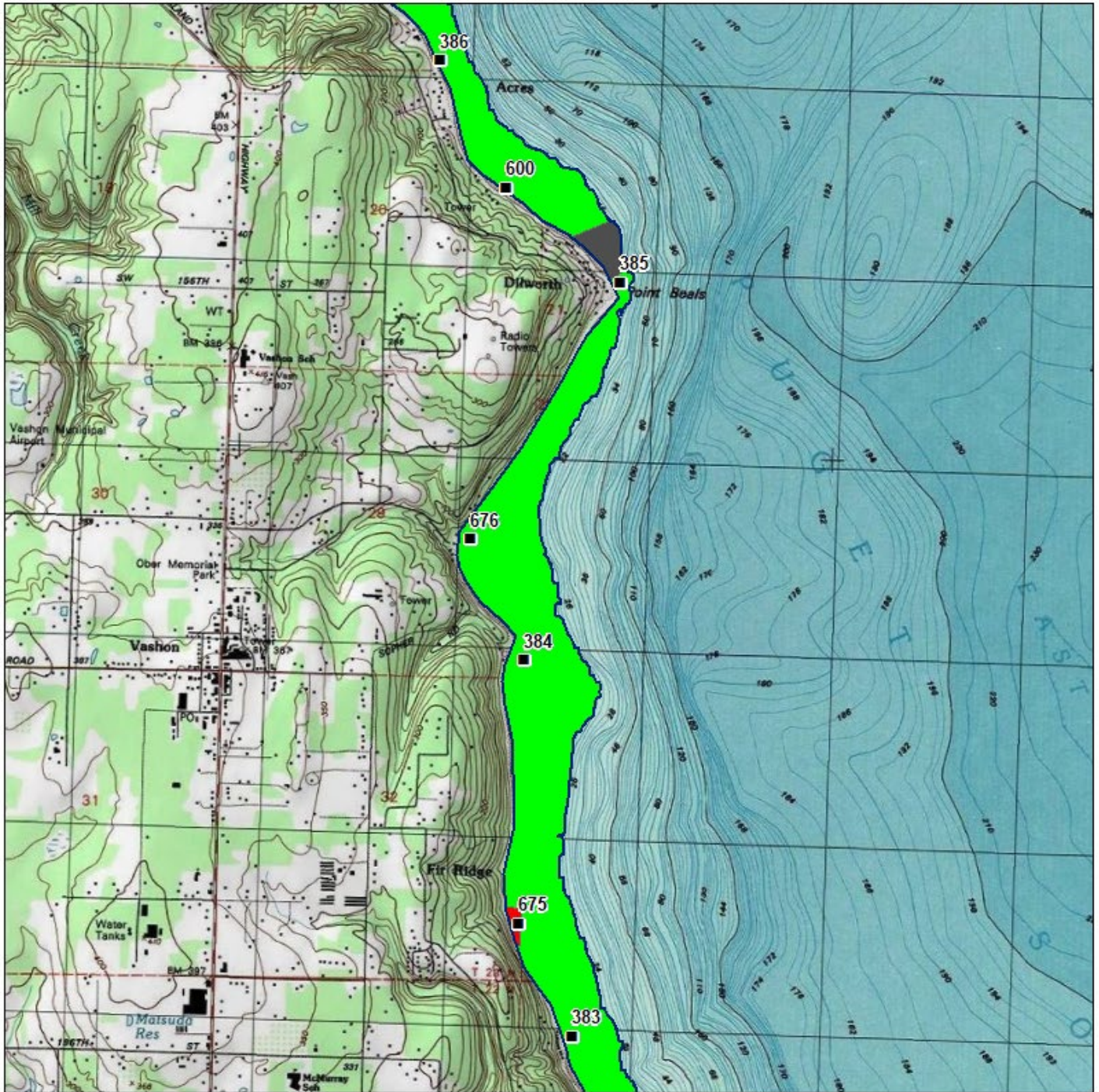
# Map of East Passage shellfish growing area (1 of 4)

## East Passage (2 of 4)

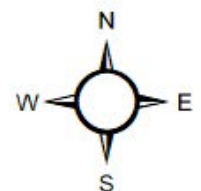


Date Updated: 8/29/2022

0 0.75 1.5 Miles

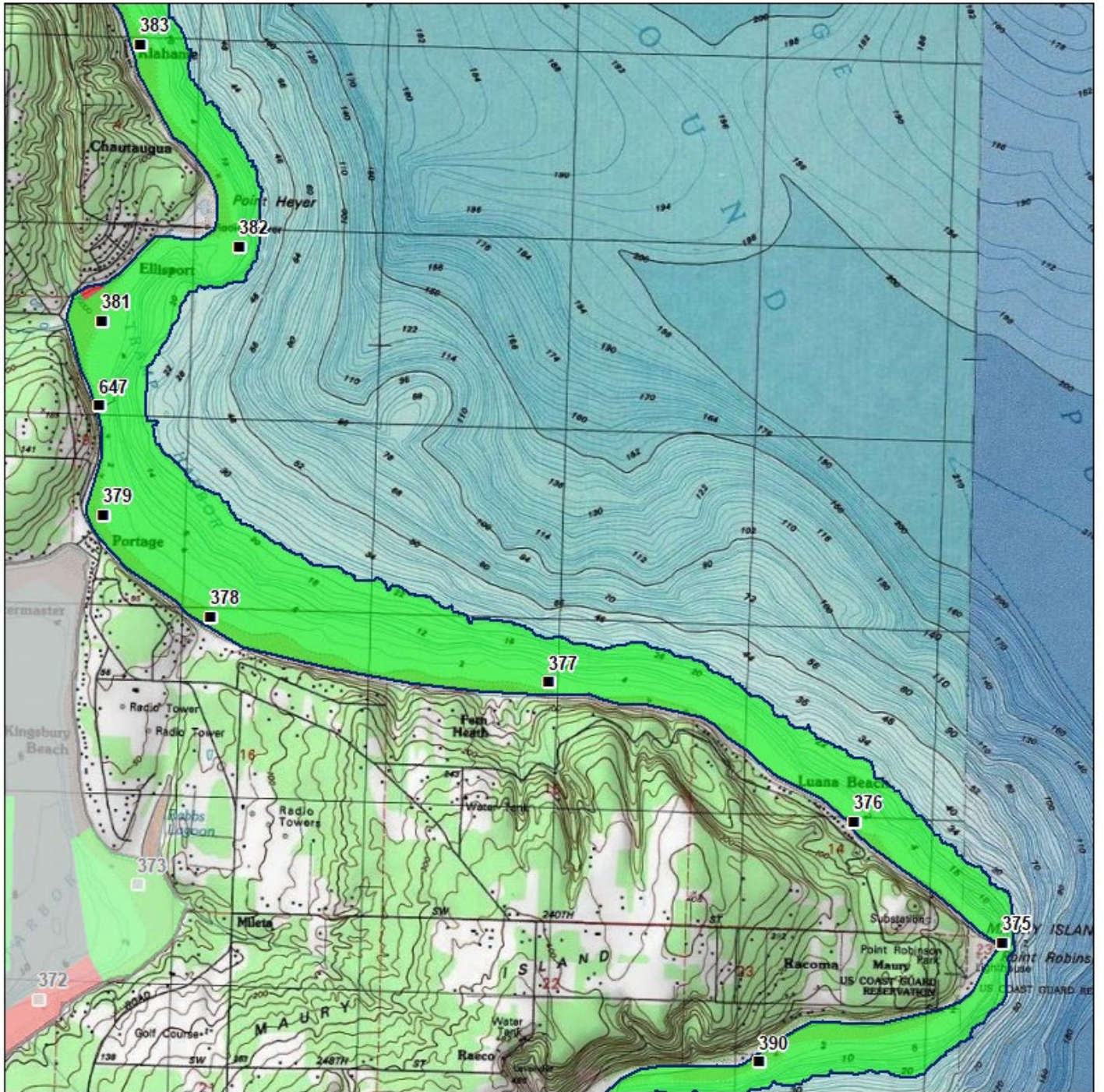


Classification	Sampling Stations
<span style="color: green;">■</span> Approved	<span style="color: black;">■</span>
<span style="color: orange;">■</span> Conditional	
<span style="color: red;">■</span> Prohibited	
<span style="color: blue;">■</span> Restricted	
<span style="color: grey;">■</span> Unclassified	



\* Some sampling stations are highlighted with grey box for ease of reading.

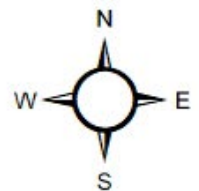
0 0.75 1.5 Miles



**Classification**

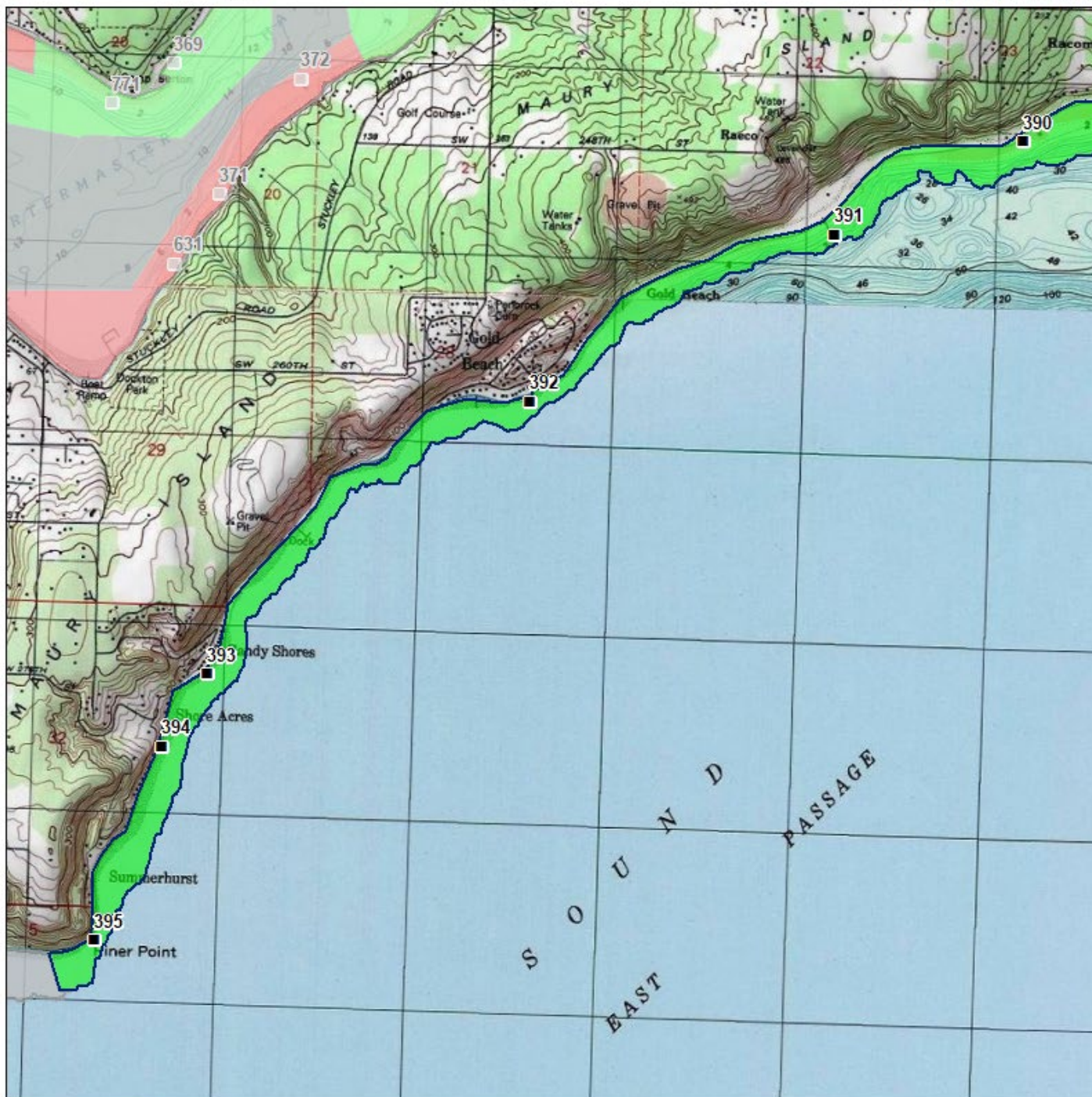
- Approved
- Conditional
- Prohibited
- Restricted
- Unclassified

**Sampling Stations**



\* Some sampling stations are highlighted with grey box for ease of reading.

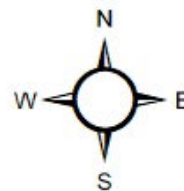
0 0.75 1.5 Miles



**Classification**

- Approved
- Conditional
- Prohibited
- Restricted
- Unclassified

**Sampling Stations**



\* Some sampling stations are highlighted with grey box for ease of reading.