

# Port Susan

## Annual Shellfish Growing Area Review



Prepared By: Scott Chernoff

Area: Port Susan

Year Ending: December 31, 2024

Classification: Approved, Prohibited

### Activities in the Growing Area in 2024

Stations 344, 345, and 346 in the Active portion of Port Susan (Triangle Cove), and Station 357 were sampled six times in accordance with National Shellfish Sanitation Program (NSSP) Systematic Random Sampling criteria. In December, the Department removed the classification of the Approved and Prohibited portions located near the mouth of the Stillaguamish River, including stations 290, 291, 292, 293, 294, 295, 296, 297, 298, 299, 335, and 411. These stations will no longer be sampled. This removal of classifications was due to a lack of commercial harvest interest in the eastern portion of the growing area.

A routine three-year evaluation was completed and there have not been any new or changes in pollution sources that would impact the growing area.

Snohomish County and local partners continued working in the Stillaguamish River watershed using National Estuary Program grant funds for on-site sewage system replacements and operation and maintenance incentives and pollution identification and control activities.

### Analytical Results of Water Samples

Table 1 summarizes results of the 30 most recent samples collected from each station.

### Change in Actual Pollution Sources that Impact the Growing Area

We currently have no information indicating the area has any new sources of pollution.

### Classification Status

- ☒ Well within the classification standards
- ☐ Meets standards, but threatened with downgrade in classification
- ☐ Fails to meet current classification standards

### Remarks and Recommendations

Table 1 shows that all stations in the Approved areas meet the NSSP water quality standard. The Department should continue to work with Snohomish County and others to identify and correct sources of pollution in the Stillaguamish River watershed.

**TABLE 1. Summary of Marine Water Data (SRS) for the Port Susan Growing Area**

Sampling Event Type: Regulatory

Maximum Number of Samples: 30

Tides Included: All

Station Number	Classification	Date Range	Range (FC/100mL)	Geomean (FC/100mL)	Est. 90 <sup>th</sup> Percentile (FC/100mL)	Meets Standard
344	Approved	3/4/2020 - 11/4/2024	1.7 - 79.0	3.9	16.2	Y
345	Approved	5/13/2020 - 11/4/2024	1.7 - 21.0	3.3	10.4	Y
346	Approved	5/13/2020 - 11/4/2024	1.7 - 49.0	3.7	14.0	Y
357	Unclassified	10/23/2019 - 11/4/2024	1.7 - 130.0	4.8	24.9	Y

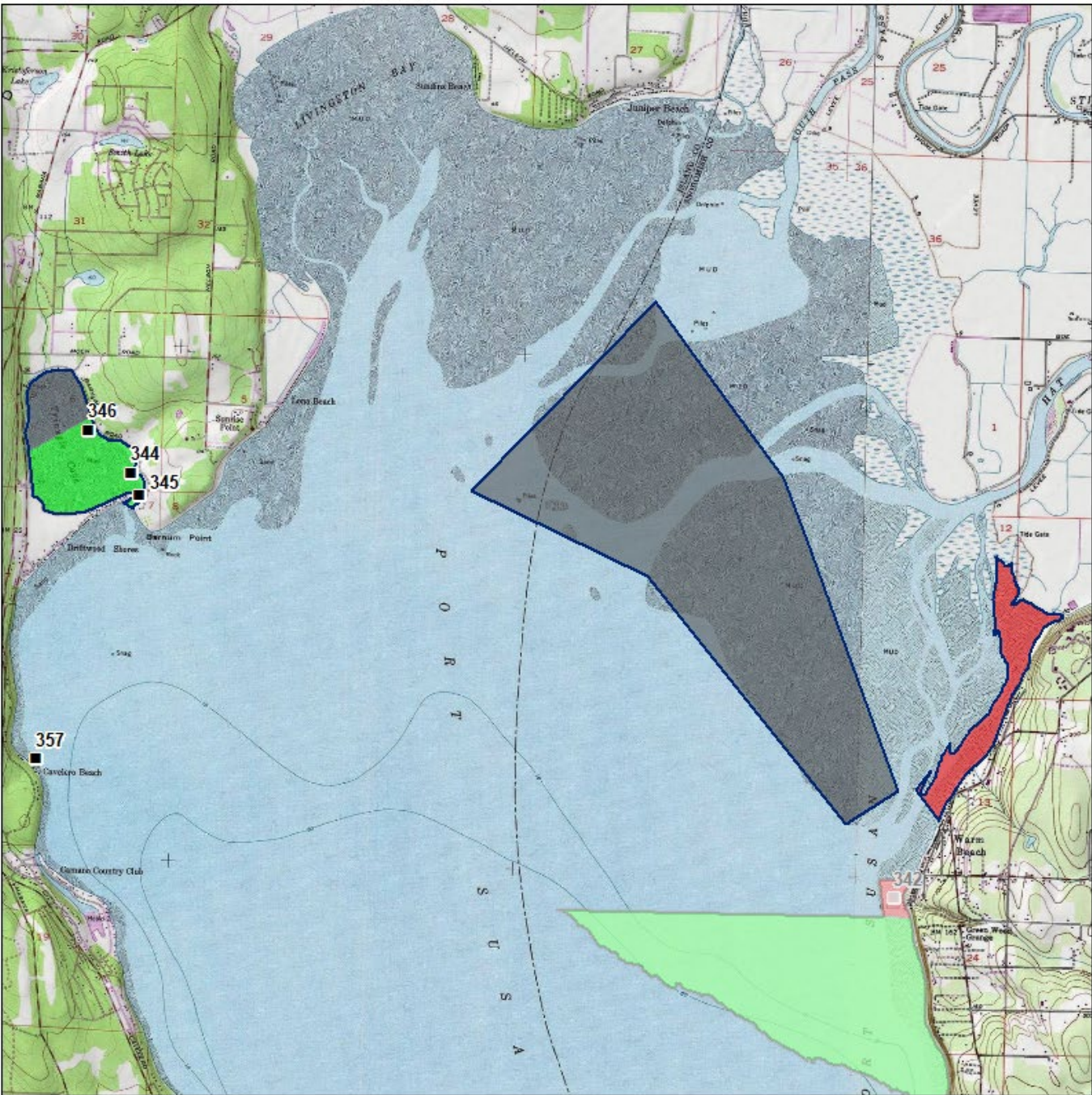
The standard for approved shellfish growing waters is fecal coliform geometric mean not greater than 14 organisms/ 100 mL with an estimated 90th percentile not greater than 43 organisms/ 100 mL. The above table shows bacteriological results in relation to program standards.

MAP 1. Port Susan Growing Area

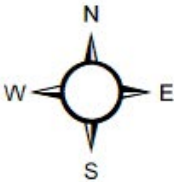
Port Susan



Washington State Department of Health  
Date Updated: 2/7/2025



Classification	Sampling Stations
Approved	■
Conditional	
Prohibited	
Restricted	
Unclassified	



\* Some sampling stations are highlighted with grey box for ease of reading.