

**WASHINGTON STATE DEPARTMENT OF HEALTH
OFFICE OF SHELLFISH AND WATER PROTECTION**

ANNUAL GROWING AREA REVIEW

PREPARED BY: Lawrence Sullivan, Public Health Advisor

AREA: Birch Bay

YEAR ENDING: December 31, 2010

CLASSIFICATION: Approved, Prohibited, Unclassified

ACTIVITIES IN THE GROWING AREA IN 2010:

Samples were collected from each station in the growing area six times during the year using the Systematic Random Sampling method. Birch Bay was closed for a week in February after a sewage overflow of about 10,000 gallons of sewage into Terrell Creek. Whatcom County coordinates a Shellfish Protection District in Birch Bay and is actively investigating pollution sources in the area Terrell Creek watershed.

ANALYTICAL RESULTS OF WATER SAMPLES:

Table 1 summarizes the results of all samples collected from the area. This summary shows that all stations in the approved portion of the growing area pass the NSSP water quality standard.

CHANGE IN ACTUAL POLLUTION SOURCES THAT IMPACT THE GROWING AREA:

We currently have no information indicating that the area has new sources of pollution.

CLASSIFICATION STATUS:

- Well within the classification standards
- Meets standards but some concerns
- Meets standards but threatened with a downgrade in classification
- Fails to meet classification standards

REMARKS AND RECOMMENDATIONS:

Table 1 shows that all stations meet the NSSP water quality standards for an Approved classification and the area is correctly classified. Pollution source investigations are underway in the Terrell Creek watershed.

Table 1

SUMMARY OF MARINE WATER DATA (SRS)

Growing Area: **BIRCH BAY**

Classification: **Approved, Prohibited, Unclassified**

From **09/28/2005** To **11/16/2010**

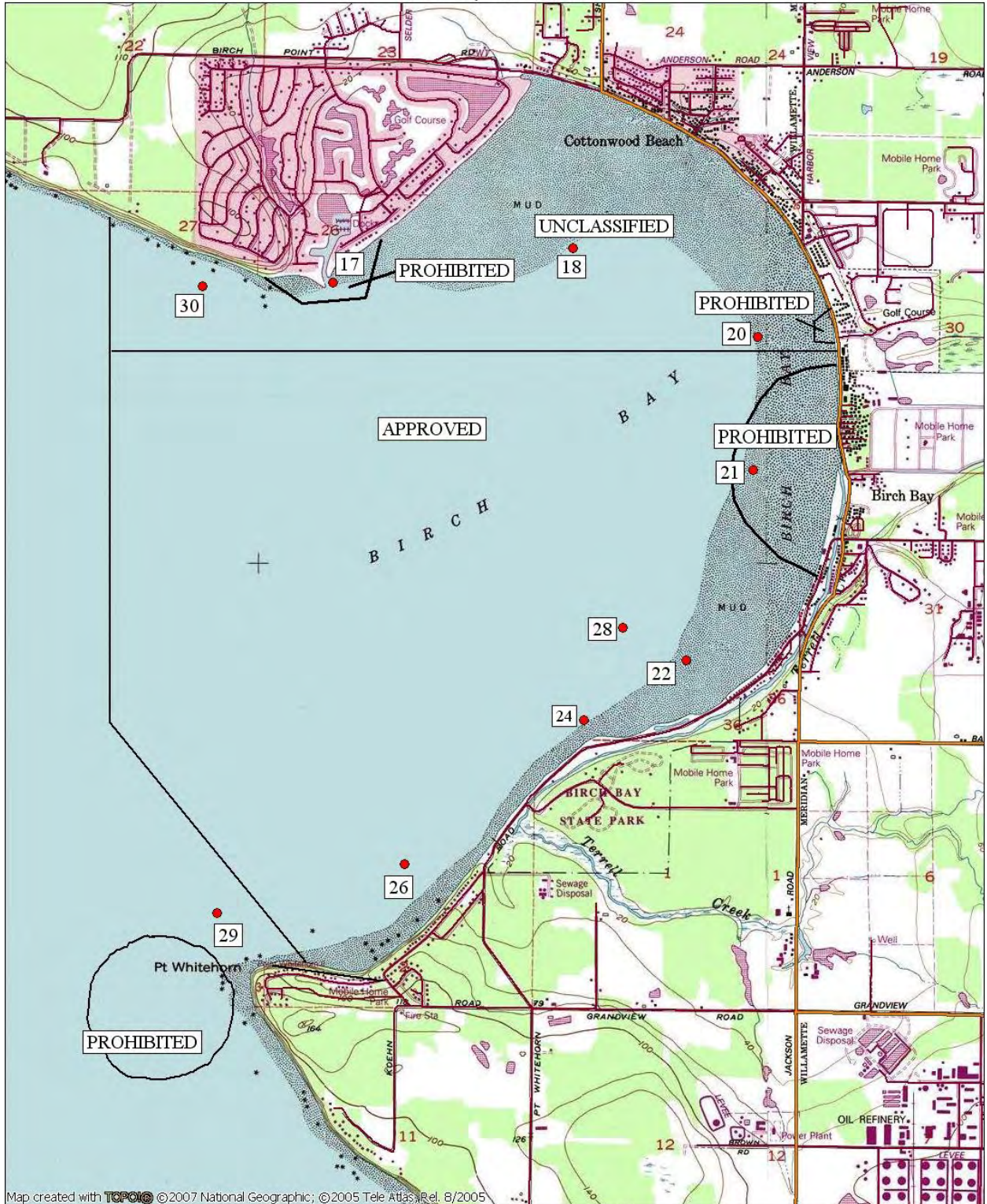
FECAL COLIFORM ORGANISMS/100 ML

Station Number	Classification	Number of Samples	Range	Geometric Mean	Est. 90th Percentile	Meets Std.
22	Approved	31	1.7 - 23.0	2.8	9.0	Yes
24	Approved	31	1.7 - 33.0	2.3	5.0	Yes
26	Approved	31	1.7 - 46.0	2.1	5.0	Yes
28	Approved	31	1.7 - 49.0	3.0	11.0	Yes
17	Prohibited	31	1.7 - 79.0	2.9	10.0	Yes
21	Prohibited	31	1.7 - 23.0	2.3	5.0	Yes
18	Unclassified	31	1.7 - 13.0	2.1	4.0	Yes
20	Unclassified	30	1.7 - 49.0	2.3	6.0	Yes
29	Unclassified	31	1.7 - 14.0	1.9	3.0	Yes
30	Unclassified	31	1.7 - 6.8	1.8	2.0	Yes

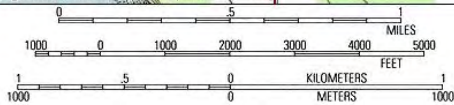
All tides information is presented

The standard for approved shellfish growing waters is fecal coliform geometric mean not greater than 14 organisms/100 ml and an estimate of the 90th percentile not greater than 43 organisms/100 ml. The above table shows bacteriological results in relation to program standards.

Birch Bay 11/20/2008



Map created with **TOPIC** © 2007 National Geographic; © 2005 Tele Atlas, Rel. 8/2005



TN / MN
17 1/2
01/29/10